

USB cable brush tutorial

Hardware to be prepared: computer, USB cable

1. Download the brush tool: USB_Burning_Tool_V2.1.6.8

Tool download link link:

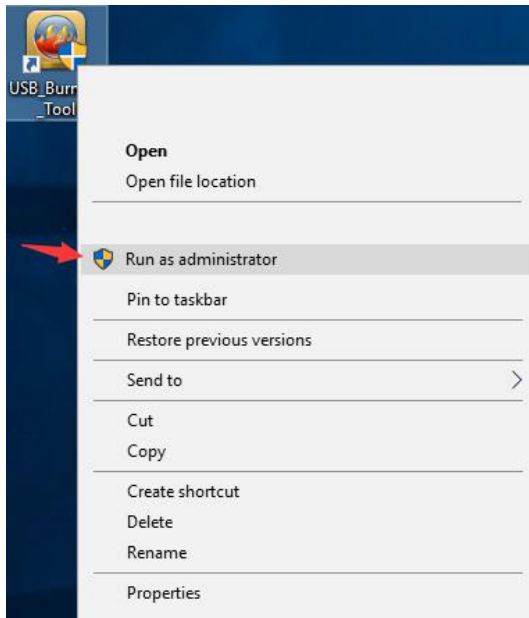
https://beelink-my.sharepoint.com/:f/g/personal/firmwareservice_beelink_onmicrosoft_com/EvtdCFRICqVOMVR8NJDBLscBSXfQ4_VW83gvH50emxF0iA?e=OoUWKE

Follow the wizard prompts to install and complete step by step, the icon appears on the desktop

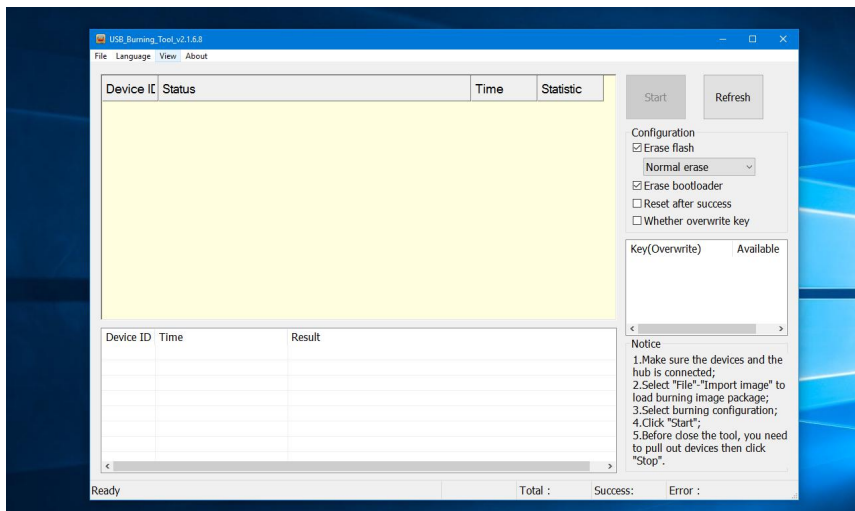


2. Download the installation package to store the easy-to-find location

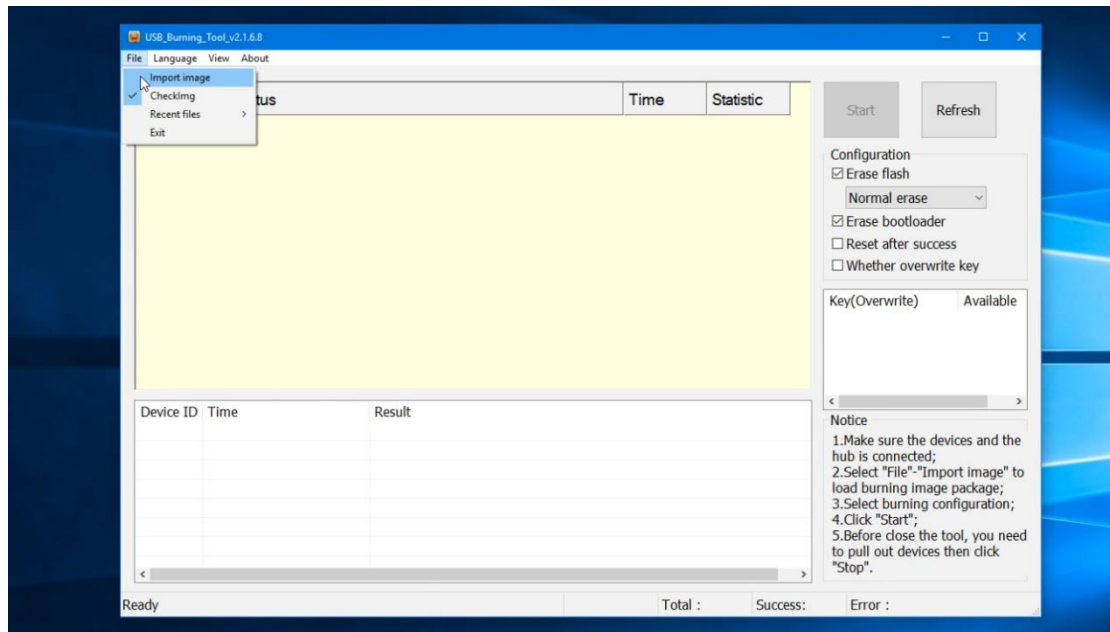
3. Right click on Run as administrator and run as administrator



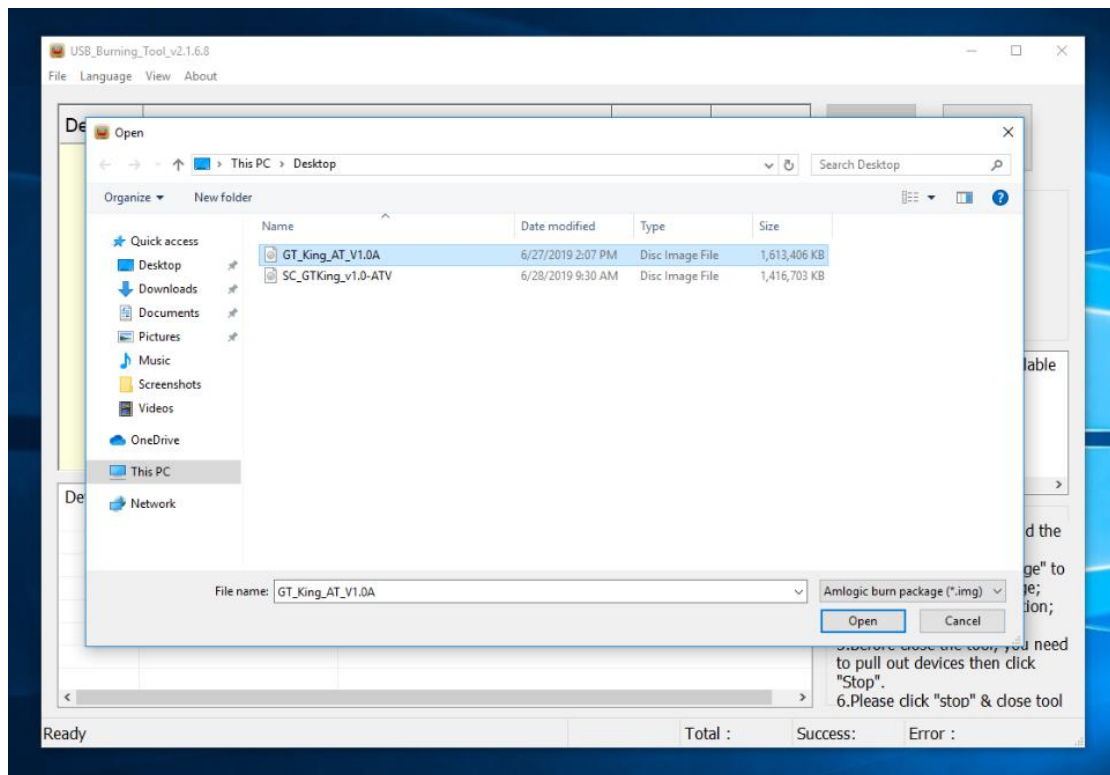
4. Pop up the brush interface, as shown below



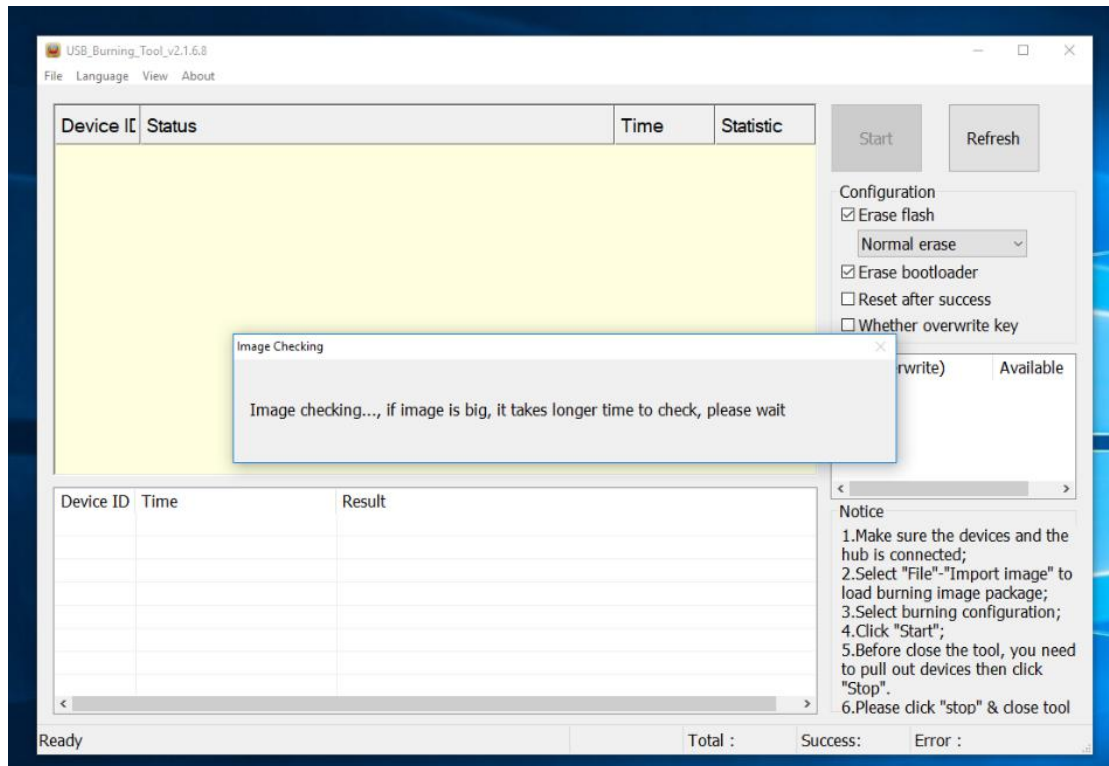
5. Click File in the upper left corner and select Import image, as shown below.



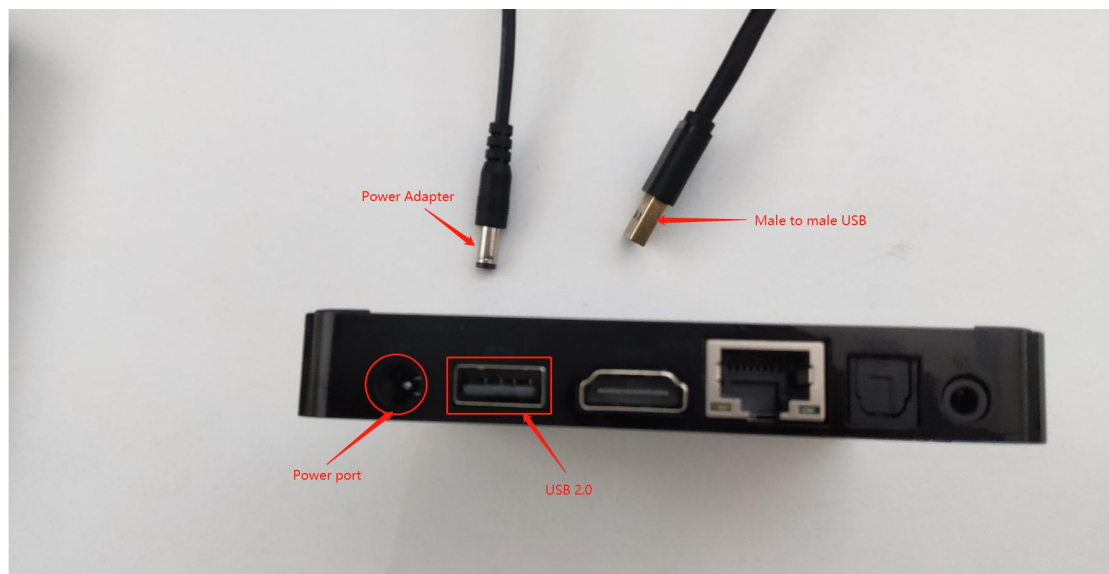
6. Load the firmware, click Import image to enter, find the downloaded USB cable brush firmware location, select and click to open, as shown below



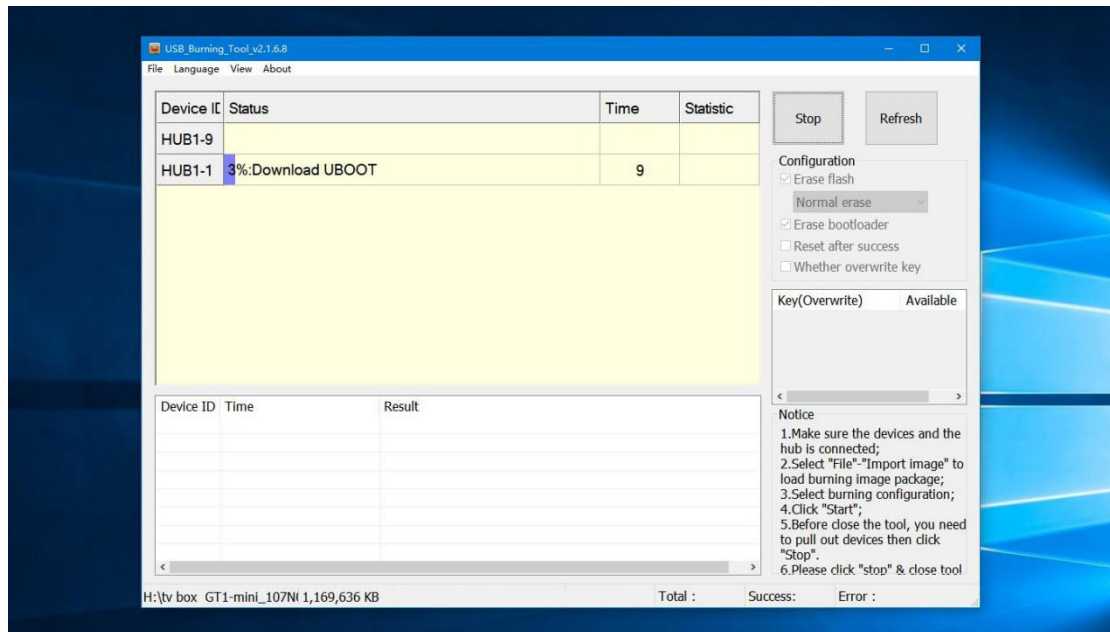
7. The interface pops up, waiting for the interface to disappear, that is, the brush package is fully loaded, and then click Start.



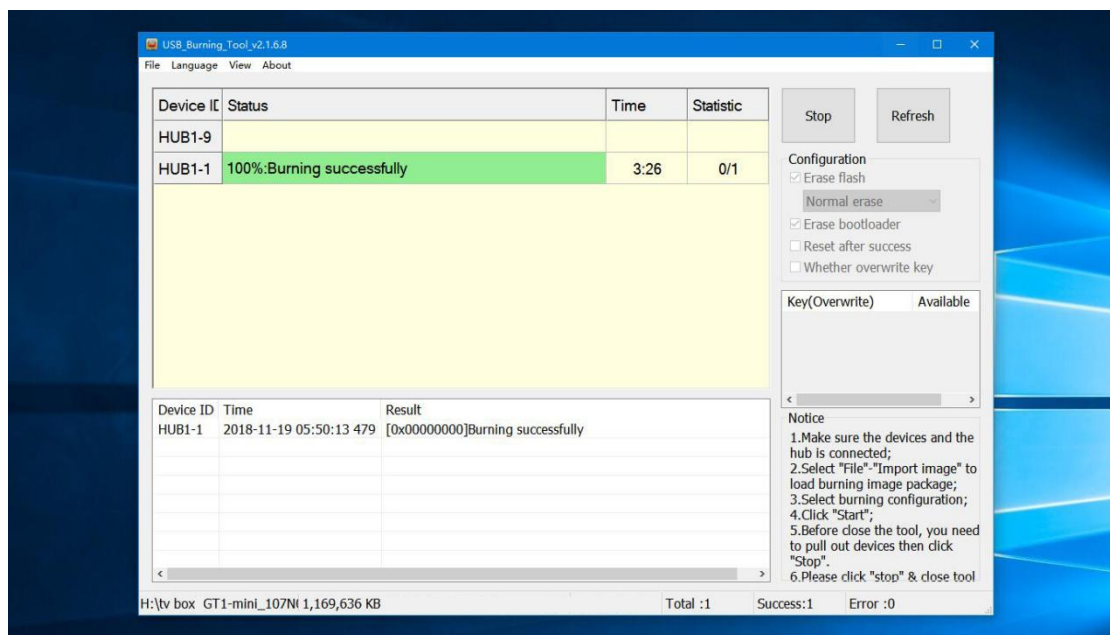
8. Plug the male to male USB end into the computer's USB port, plug the power adapter into the socket, and then plug the power adapter and the male to male USB port into the corresponding port of the GT-King (note: the GT-King port must be plugged in at the same time Otherwise, the firmware cannot be read normally.)



9 . Wait for the loading interface to appear, as shown below



10.Load 100%, unplug the GT-King USB cable and power cable, click stop, close the tool, and finish the brush.



SD card brush tutorial



Need to prepare the brush hardware: SD card

1. Copy the downloaded SD card flasher firmware to the SD card root directory (the SD card format must be FAT32)


factory_update_param.aml

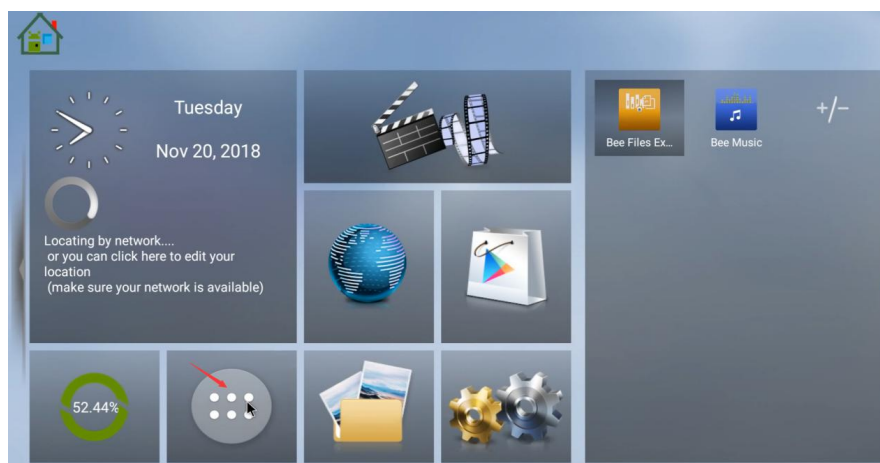
recovery.img

922x--ota-20190606.zip

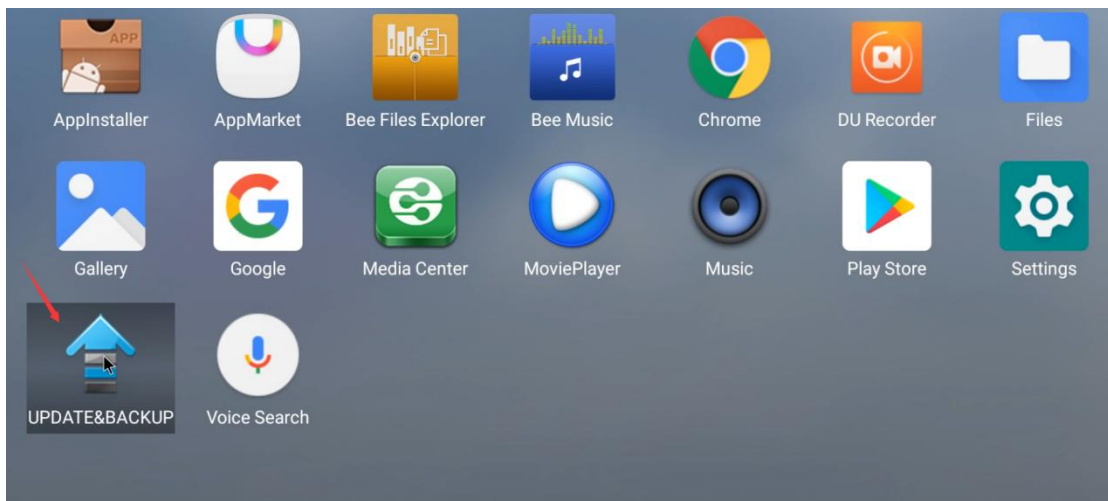
2. Insert the SD card into the SD card slot position, plug in the HDMI cable, turn on the monitor, plug in the power and turn it on.



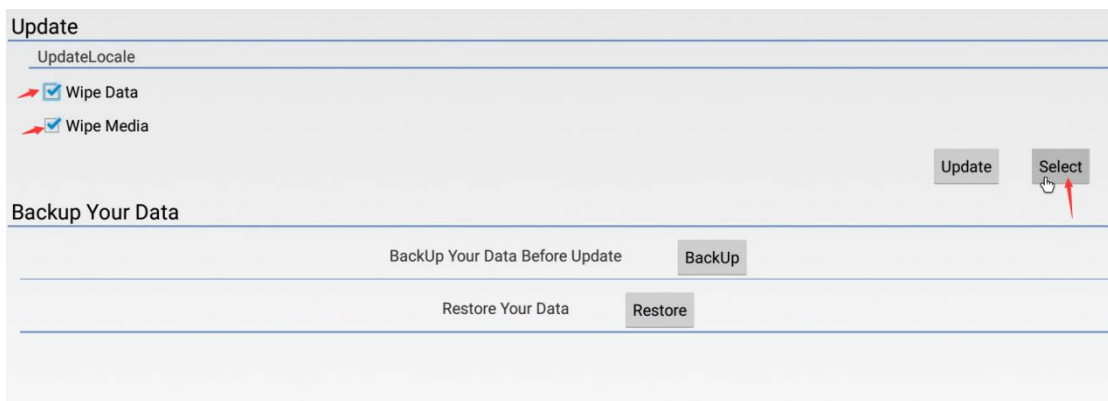
3. Go to the home page and click on the icon , Enter the application page



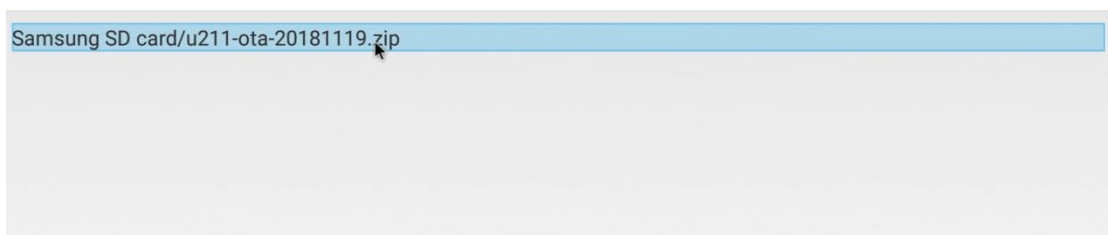
4. Click to open UPDATE&BACKUP



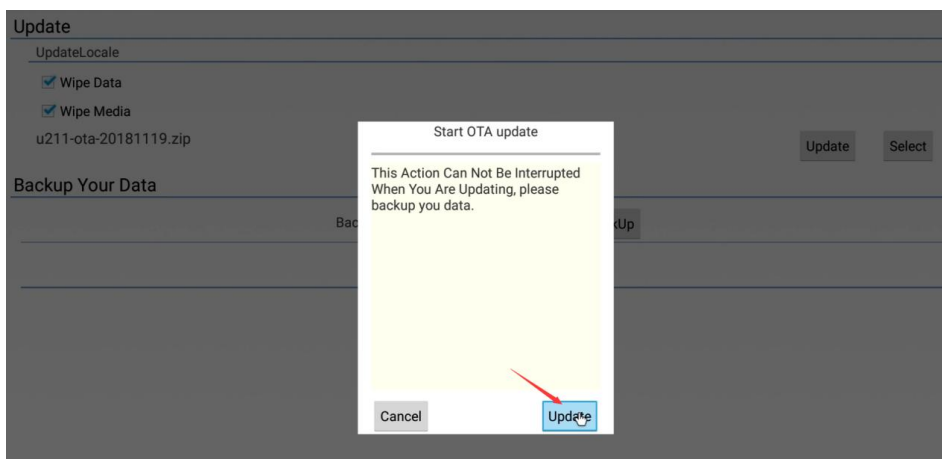
Check Wipe Data and Wipe Media, click Select



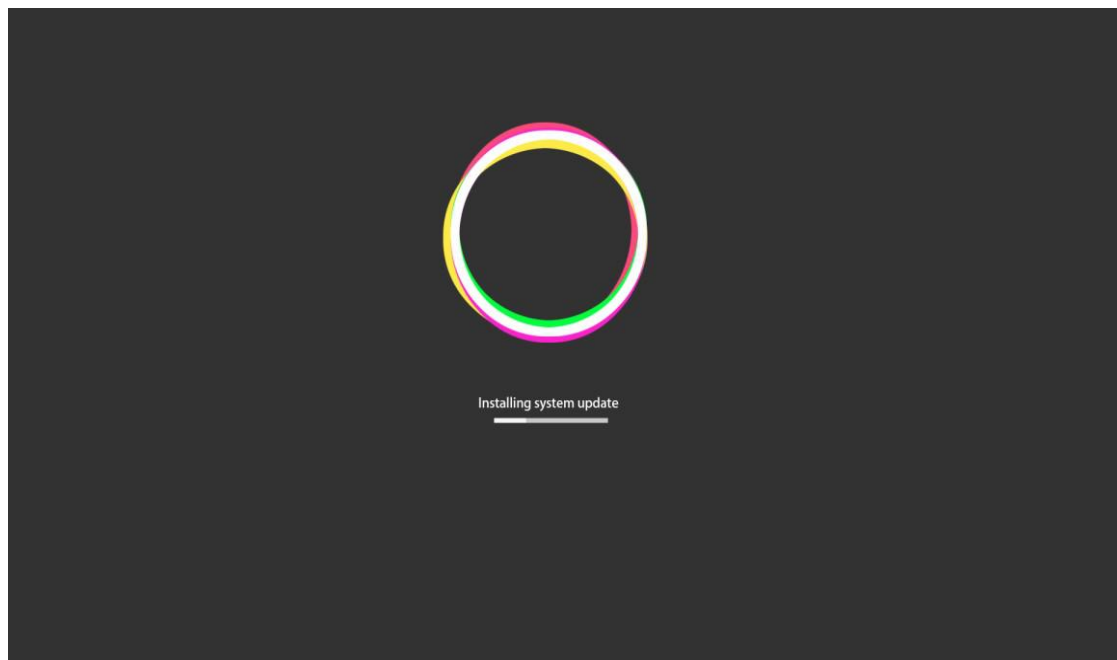
Pop up the SD card brush package and click to select



Pop up Start OTA update, click Update to start the upgrade.



Wait for the upgrade to complete



Finish, thanks for watching!

If you want to order our machines in bulk or become a Beelink distributor, please contact our Foreign trade sales as follow. We will offer discounts and customized services.

Contact information

Email: business@bee-link.com

For more information, please pay attention to Beelink's official website!