
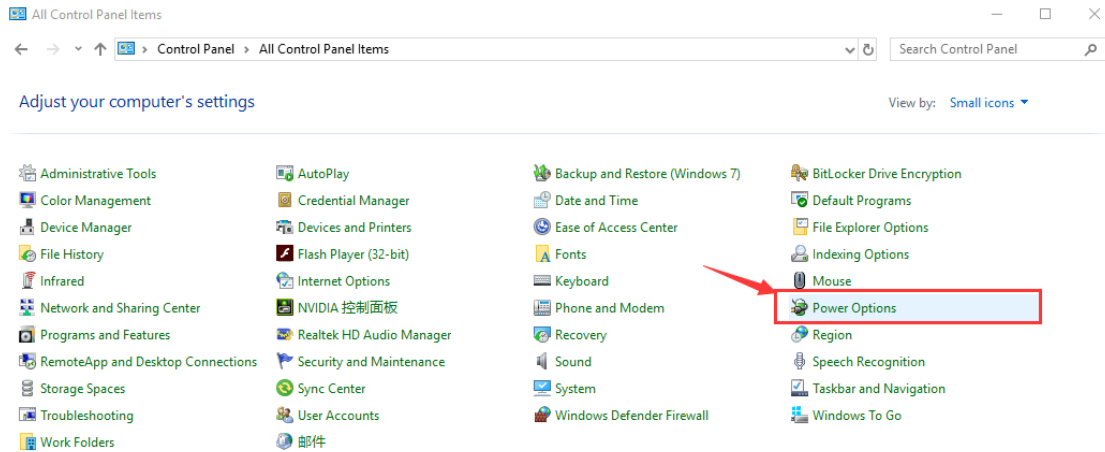


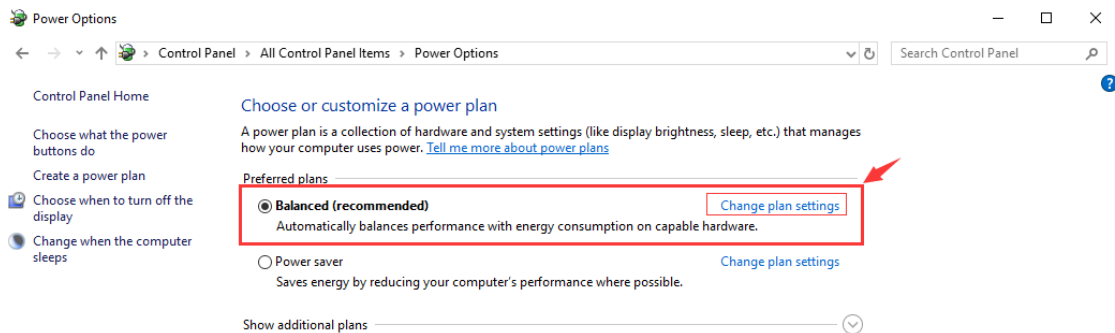
How to set the machine to never sleep



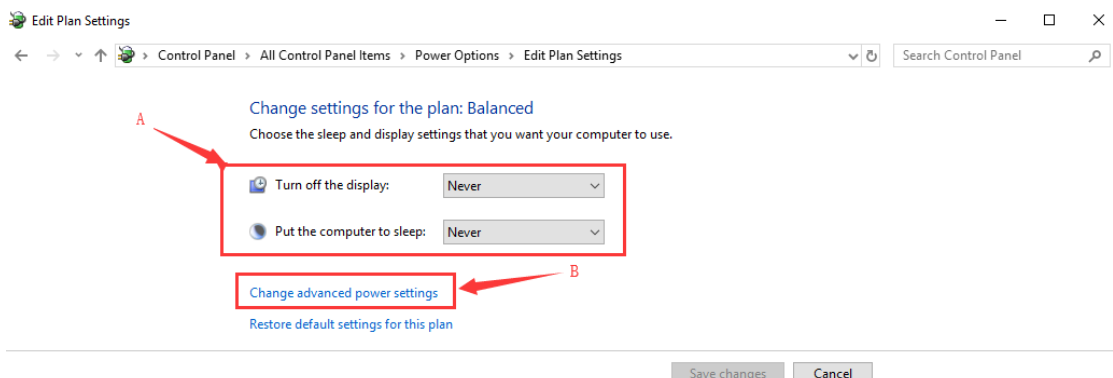
1. First, find Control Panel , right-click open
2. Enter the panel control mode, select Power Options



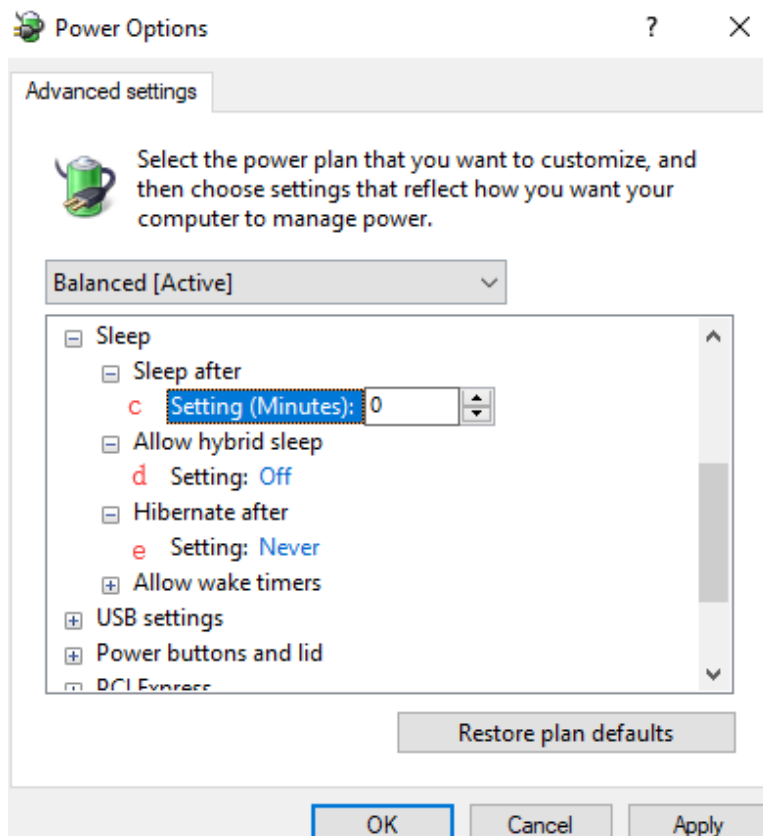
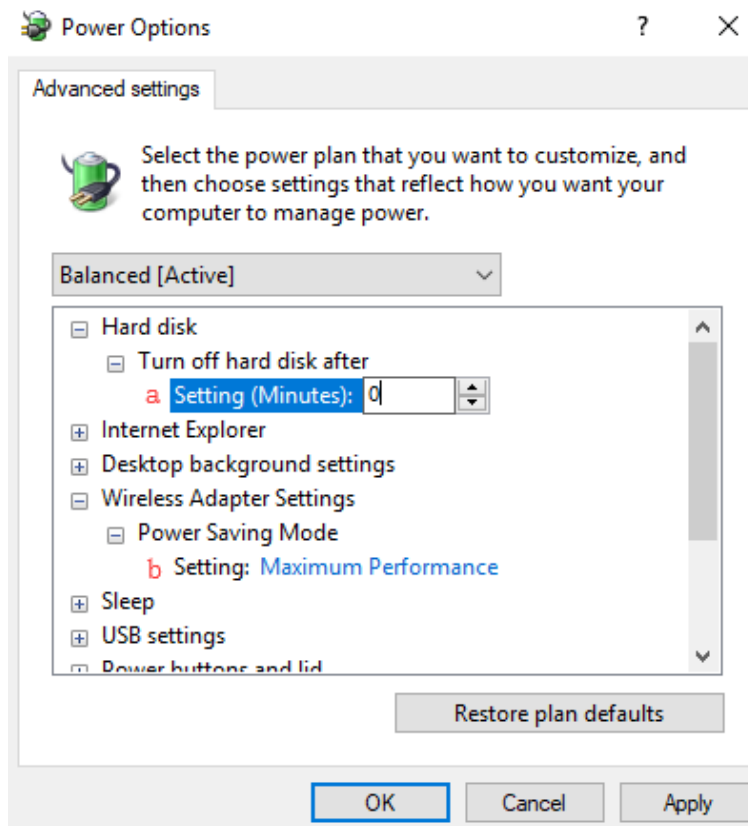
3. Then enter the power management interface, find Balanced Change plan settings option and click.

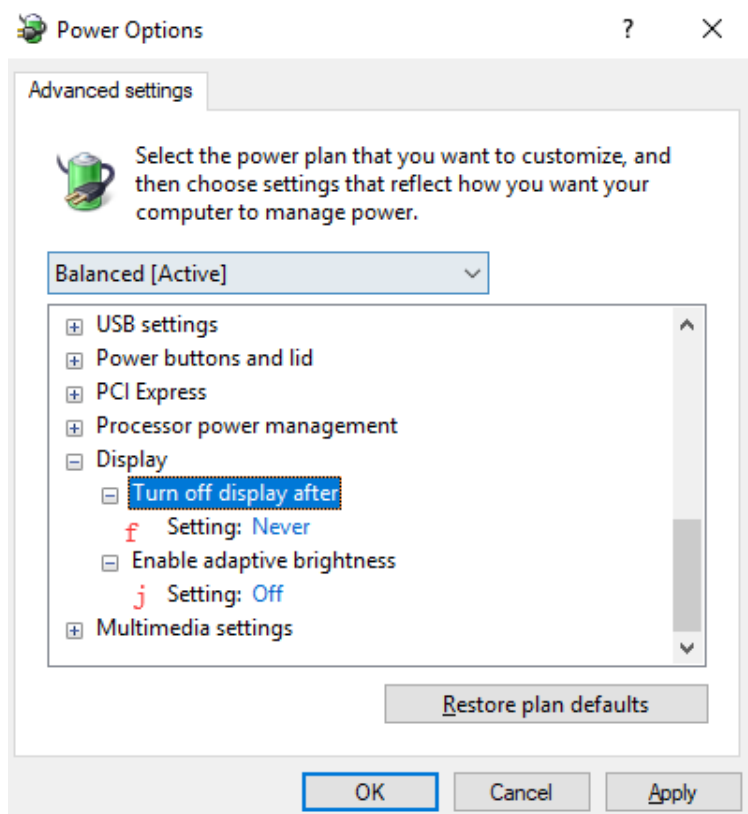


4. Select A to make simple settings. If you need to make sure that the machine will remain forever, click on B to proceed with further settings



5. If you choose to continue setting, click Change advance power settings, The dialog box pops up. The set value is the same as the dialog box shown in the figure below. (Refer to steps a~j)





6. Finally, click , Perfect setting never sleeps.