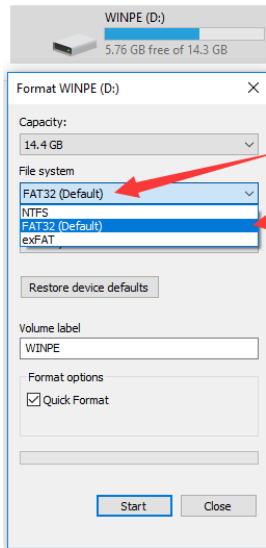


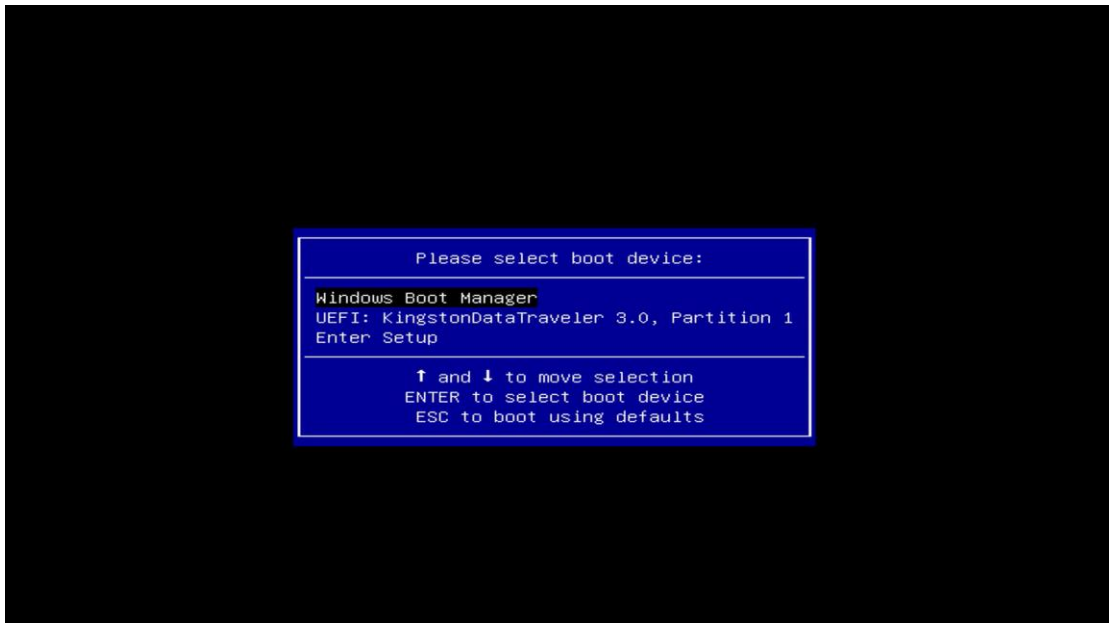
# How to install Windows 10?

1. Prepare a U disk with a storage capacity of at least 8G
2. Right click and select format... Format U disk to FAT32 format, click start to finish formatting

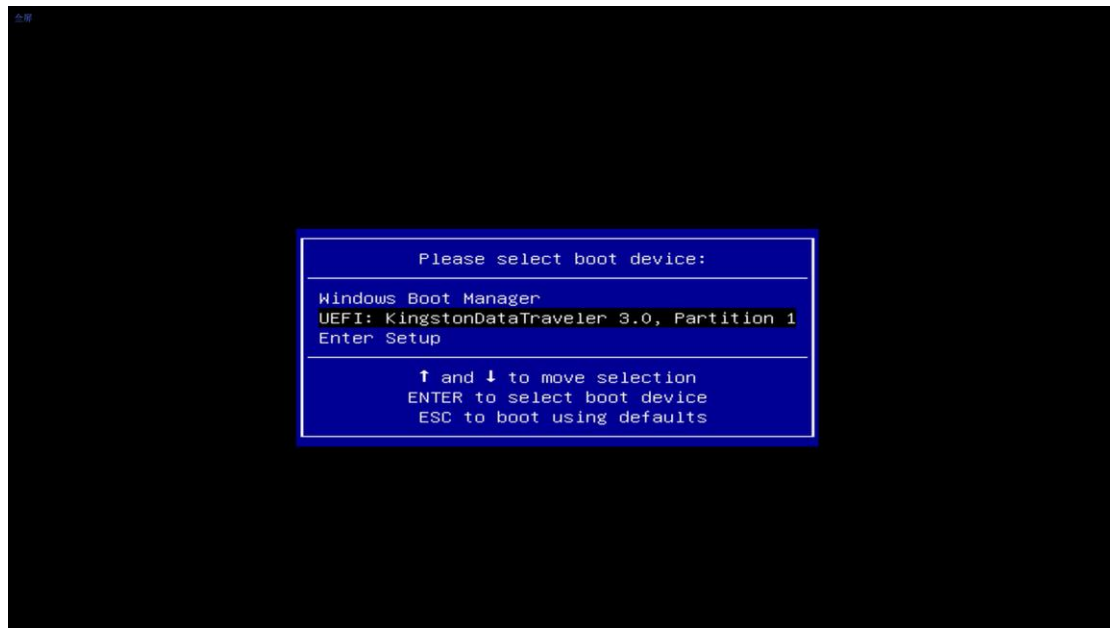


FAT32 Format

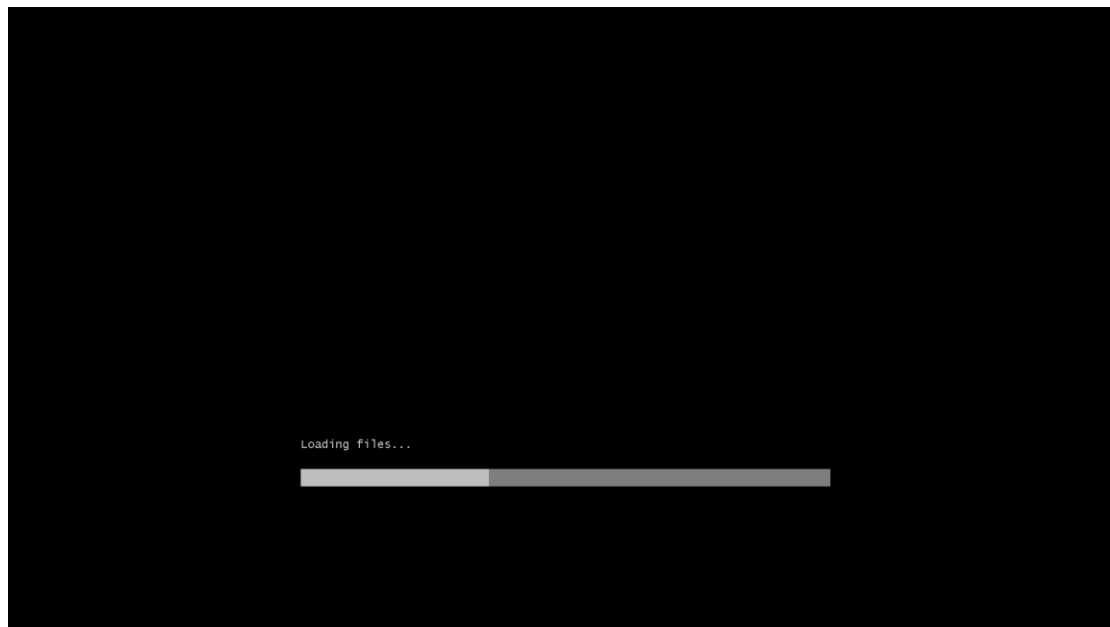
- 3 . Copy your system files to U disk, and it must be in the root directory of U disk.
- 4 . Insert the U disk, boot your mini pc and immediately press F7 repeatedly to enter the boot device menu interface.



5. Select UEFI and press Enter to enter.



6 . Enter the loading system interface, just wait for automatic loading.





```
X:\windows\system32\cmd.exe - startnet.cmd
assign letter="S"
create partition msr size=16
create partition primary
format quick fs=ntfs label="Windows"
assign letter="W"
shrink desired=700
create partition primary
format quick fs=ntfs label="Recovery"
assign letter="R"
set id="de94bba4-06d1-4d40-a16a-bfd50179d6ac"
gpt attributes=0x8000000000000001
exit
.
*****
Setting up the partition table
*****
call diskpart /s x:\winpart.txt

Microsoft DiskPart version 10.0.16299.15

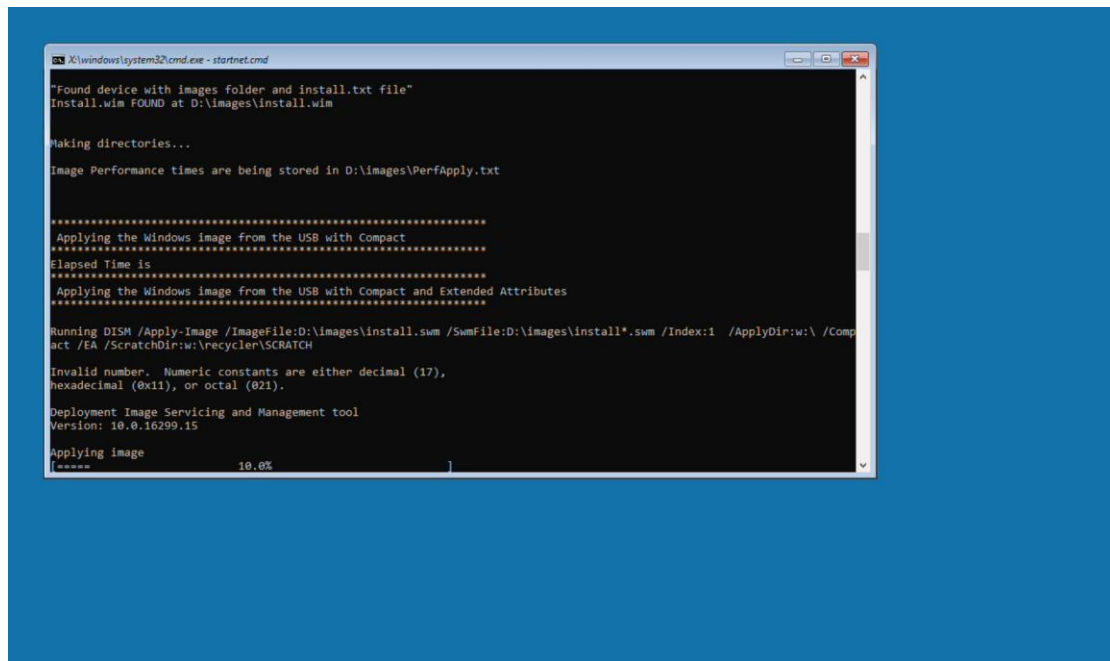
Copyright (C) Microsoft Corporation.
On computer: MININT-JJ70HGC

Disk 0 is now the selected disk.

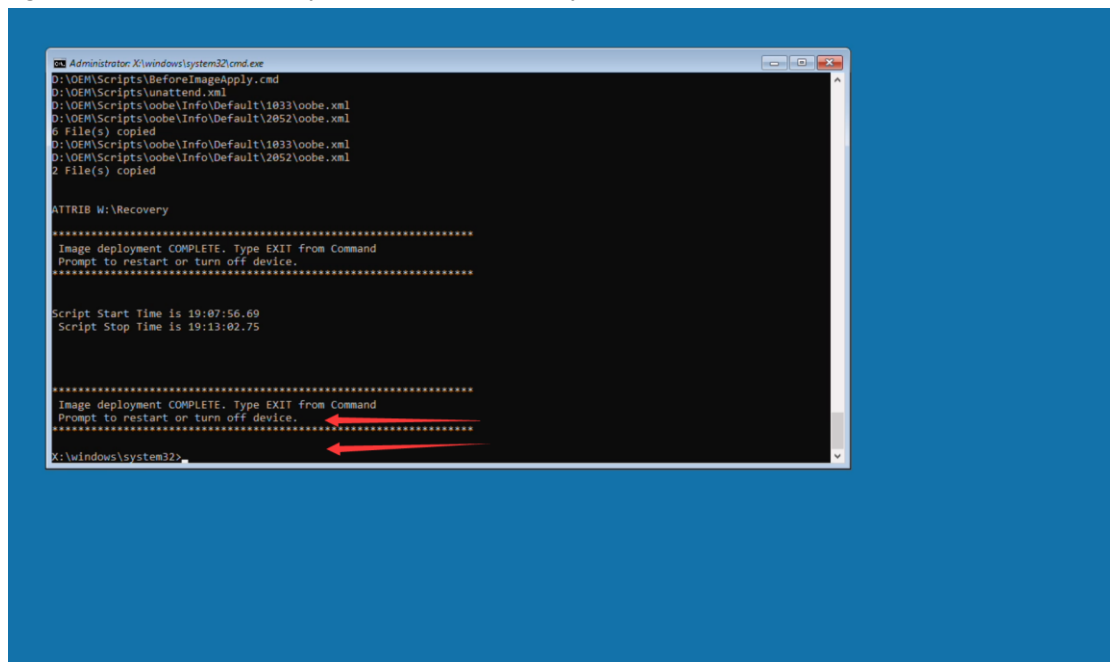
DiskPart succeeded in cleaning the disk.

DiskPart successfully converted the selected disk to GPT format.
```

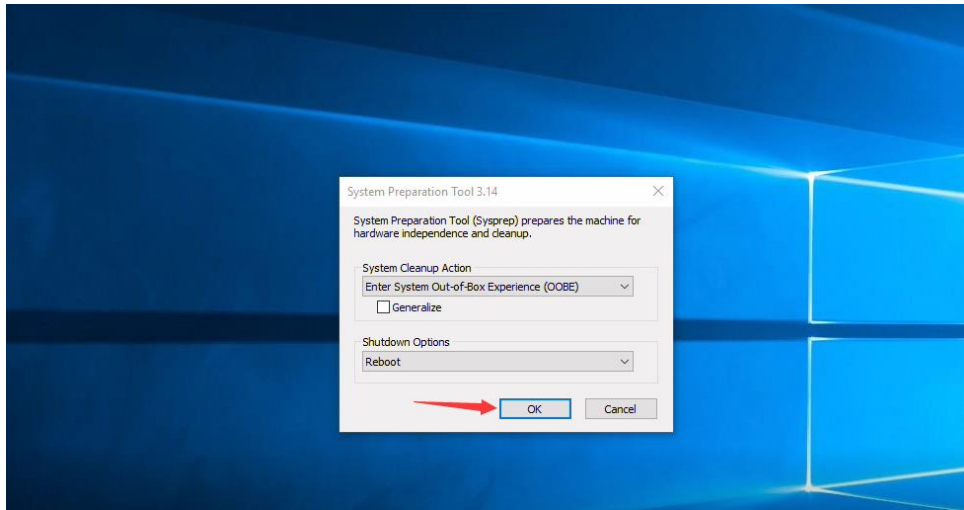
## Installing



7. 100% installation completed, when loading the interface as shown below, click on the upper right corner to close, the system will automatically restart



8. Automatic restart into the factory mode interface, the select OK , The machine will restart automatically, enter the system to start setting, after completing your settings, you can use your computer normally.



End.....