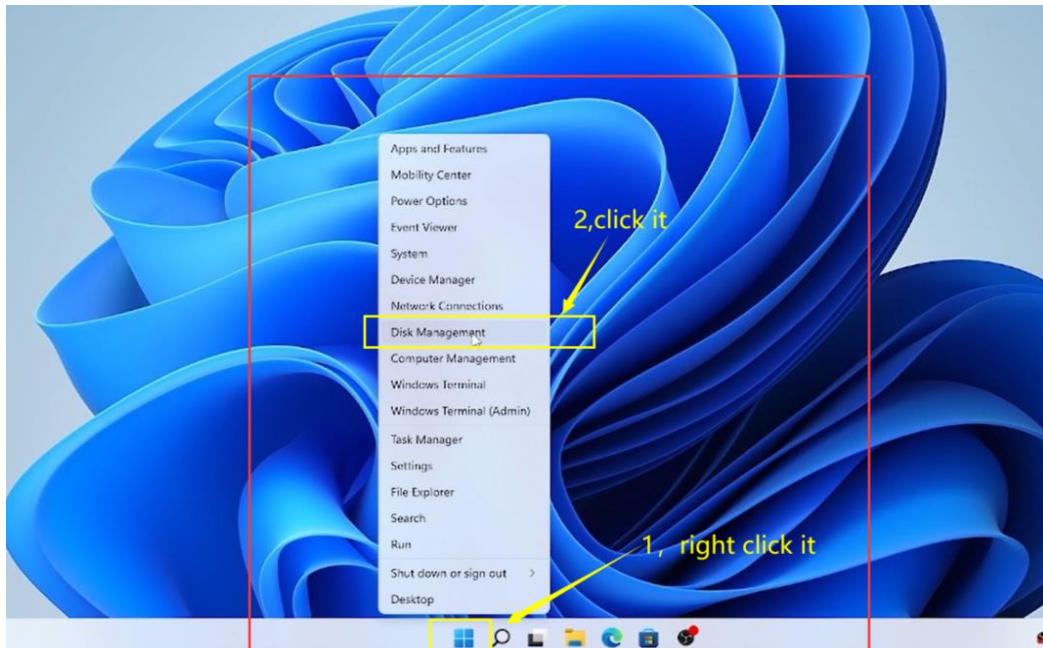
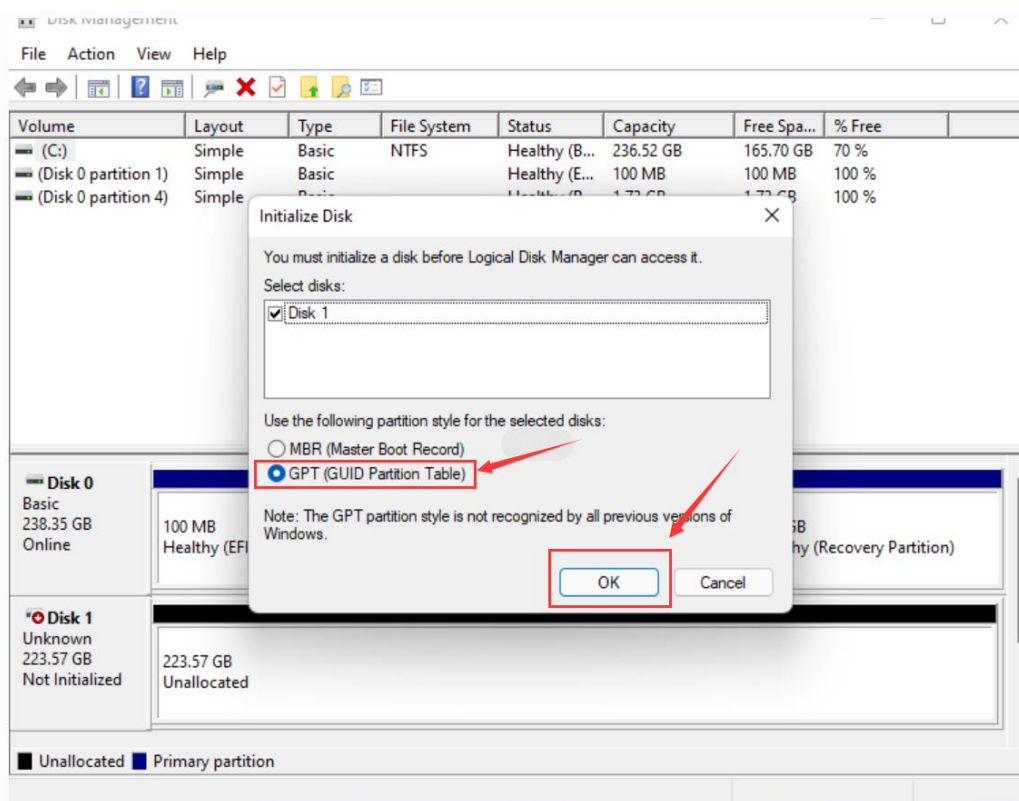


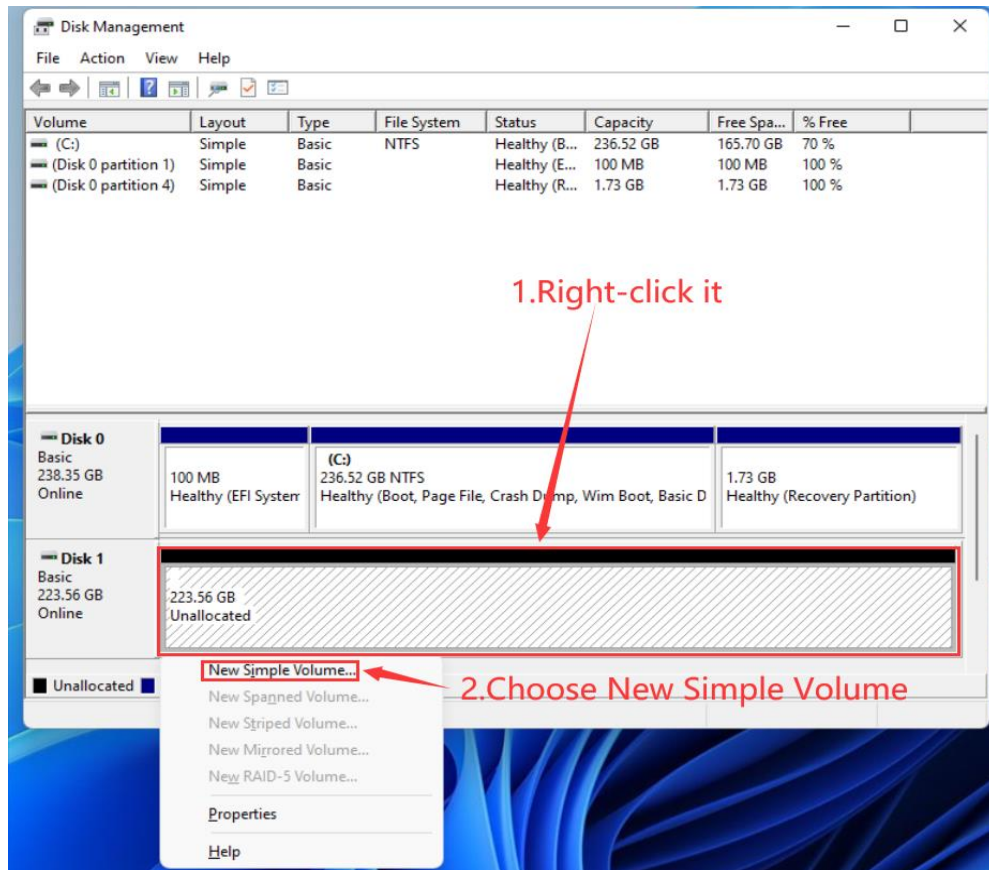
1, Please restart the machine once the new hard disk is installed. After the restart, right-click the "Start" option, then left-click management.



2, The new SSD will have a popover (Initialize Disk) in Disk Manager. Choose GPT and Click OK



3. Right-click the new partition, then left-click New Simple Volume.....



4. All pop-ups that pop up click next until finished.

